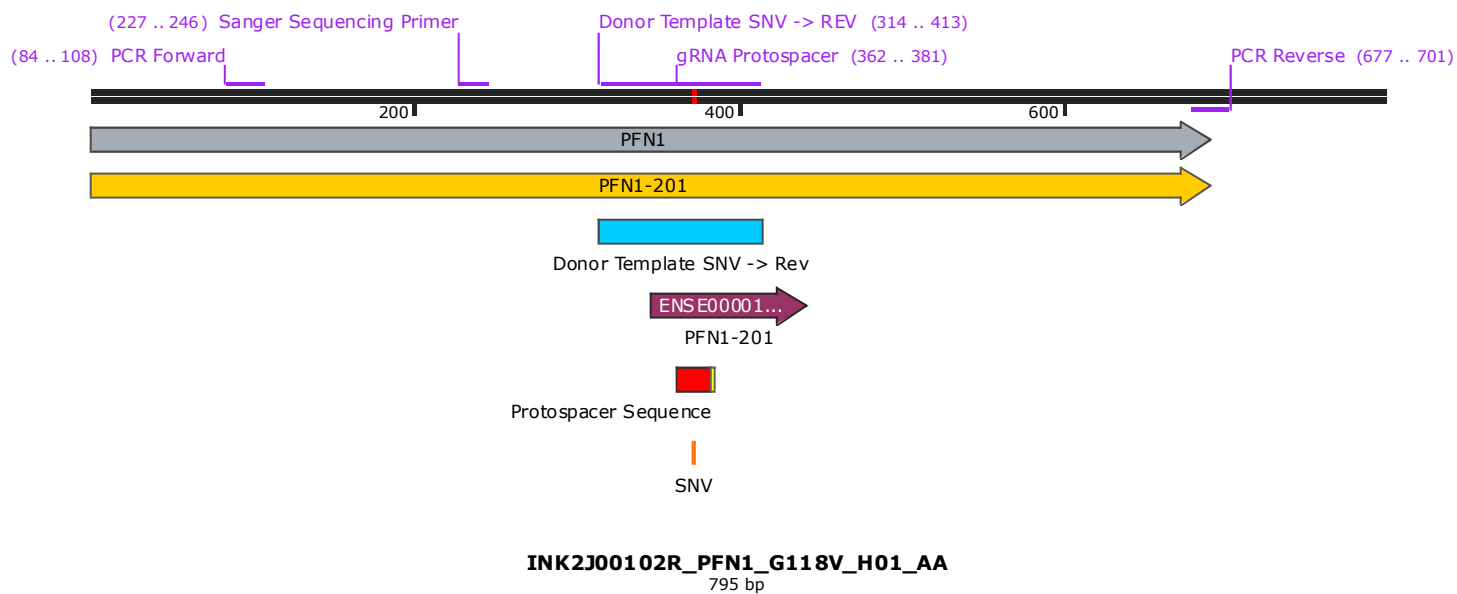
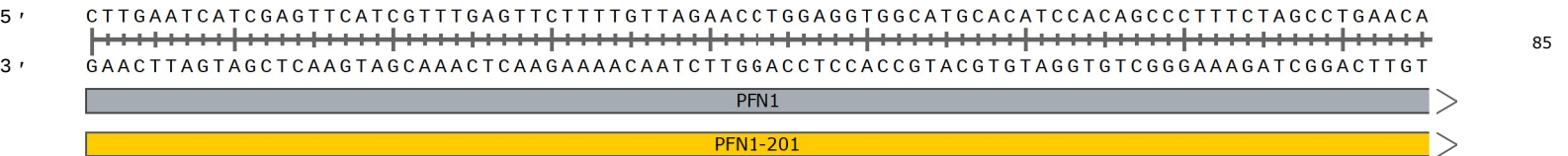


profilin 1 [Source:HGNC Symbol;Acc:HGNC:8881]



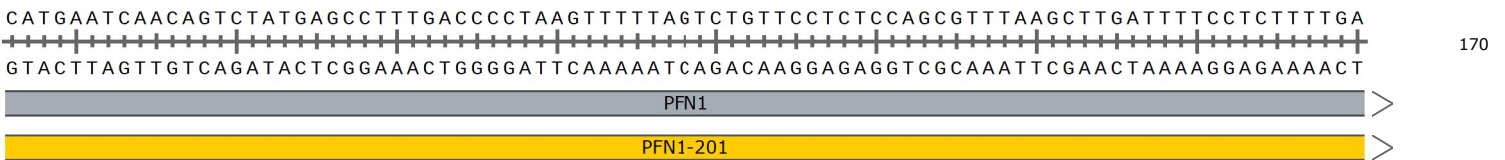
PCR Forward

CA



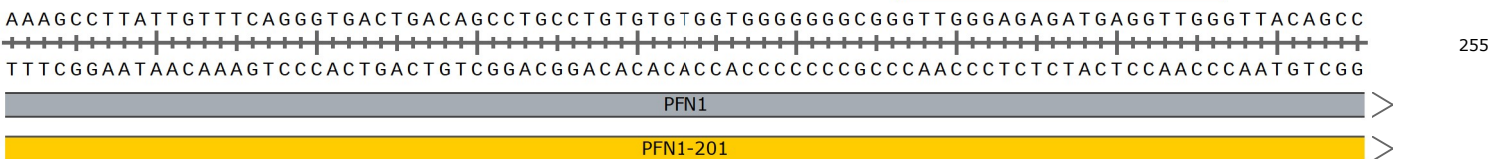
PCR Forward

CATGAATCAACAGTCTATGAGCC



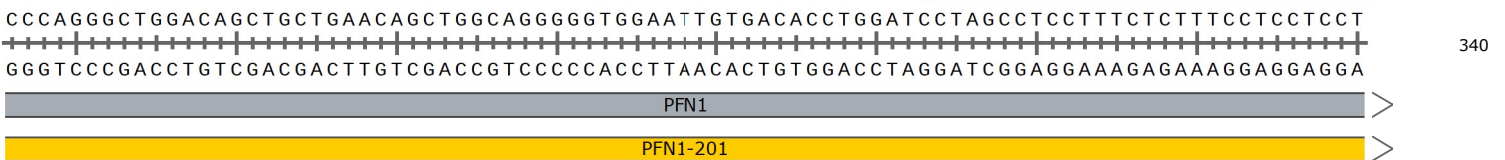
Sanger Sequencing Primer

GTTGGGAGAGATGAGGTTGG



Donor Template SNV -> REV

CTAGCCTCCTTTCTCTTTCTCCTCCTCT

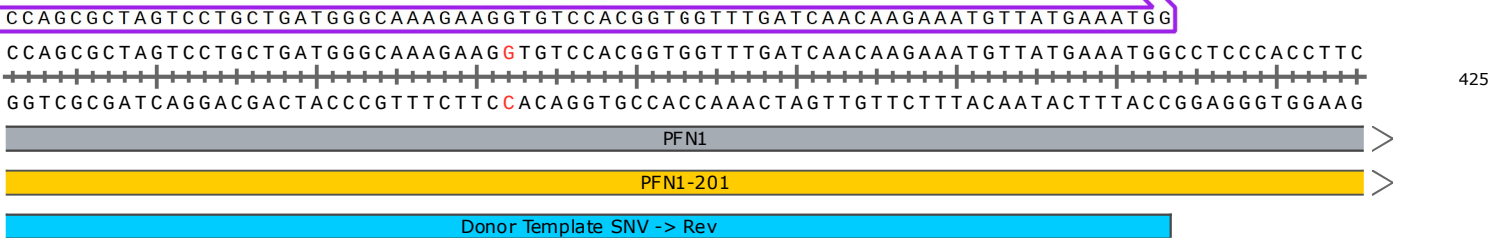


Donor Template SNV -> Rev

gRNA Protospacer

GGCAAAGAAGTGTCCACGG

Donor Template SNV -> REV



110 L V L L M G K E G V H G G L I N K K C Y E M A S H L 135

ENSE00001488299

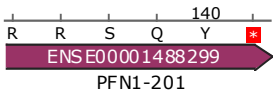
PFN1-201

Protospacer Sequence

PAM

SNV

GGCGTCCCAGTACTGACCTCGTCTGTCCCTTCCCCTTACCAGCTCCCCACAGCTTGCACCCCTTCTCCCACATACACACACA
 CCGCAAGGGTCATGACTGGAGCAGACAGGGAAGGGGAAGTGGCGAGGGGTGTCGAAACGTGGGGAAAGGAGGGGTATGTGTGTGT
 PFN1
 PFN1-201



AACCATTTTATTTTTTGGGCCATTACCCCATACCCCTTATTGCTGCCAAAACCACATGGGCTGGGGGCCAGGGCTGGATGGACAG
 TTGGTAAAATAAAAAACCCGGTAATGGGGTATGGGGAATAACGACGGTTTTGGTGTACCCGACCCCGGTCCCGACCTACCTGTC
 PFN1
 PFN1-201

ACACCTCCCCCTACCCATATCCCTCCCGTGTGTGGTTGGAAAACTTTTGTTTTTTGGGGTTTTTTTTTCTGAATAAAAAAGATT
 TGTGGAGGGGGATGGGTATAGGGAGGGCACACACCAACCTTTGAAAACAAAAAACCCAAAAAAAAGACTTATTTTTTCTAA
 PFN1
 PFN1-201



CTACTAACAAGGTGCTGTGTGATTTGAGCTTGGGTGTCAGAATGGGGGATAGGCACTGTGACTTGCCTCCTTTATCGTGGCTTGG
 GATGATTGTTCCACGACACACTAAACTCGAACCACAGTCTTACCCCTATCCGTGACACTGAACGGAGGAAATAGCACCGAACC
 PFN1
 PFN1-201



GAGCAGGGAGGTTGAGGTTACTACAAGGTGC 3'
 CTCGTCCCTCCAACCTCCATGATGTTCCACG 5'

| Feature | Location | Size | Start | End | Type |
|--|--------------------------|--------|-------|-----|-----------------|
| ✓ PFN1 | 1 .. 690 | 690 bp | ■ | → | gene |
| /note = gene ENSG00000108518 Protein coding | | | | | |
| ✓ PFN1-201 | 1 .. 690 | 690 bp | ■ | → | prim_transcript |
| /note = primary transcript ENST00000225655 | | | | | |
| PFN1-203 | 1 .. 675 | 675 bp | ■ | → | prim_transcript |
| /note = primary transcript ENST00000574872 | | | | | |
| ENO3-204 | 132 .. 795 | 664 bp | ■ | ← | prim_transcript |
| /note = primary transcript ENST00000519266 Protein coding | | | | | |
| ✓ Donor Template SNV -> Rev | 314 .. 413 | 100 bp | ■ | | misc_feature |
| ✓ PFN1-201 | 345 .. 442 | 98 bp | ■ | → | CDS |
| /codon_start = 1 | | | | | |
| /note = coding sequence ENSP00000225655 | | | | | |
| /translation = LVLLMGKEGVHGGLINKKCYEMASHLRRSQY* 31 amino acids = 3.5 kDa | | | | | |
| PFN1-203 | 345 .. 442 | 98 bp | ■ | → | CDS |
| /codon_start = 1 | | | | | |
| /note = coding sequence ENSP00000465019 | | | | | |
| /translation = LVLLMGKEGVHGGLINKKCYEMASHLRRSQY* 31 amino acids = 3.5 kDa | | | | | |
| ✓ Protospacer Sequence | 362 .. 381 | 20 bp | ■ | | misc_feature |
| ✓ SNV | 372 .. 372 | 1 bp | ■ | | misc_feature |
| /note = SNV = T REV = G | | | | | |
| ✓ PAM | 382 .. 384 | 3 bp | ■ | | misc_feature |
| ENO3-209 | 3543 .. 4,295,965,344 bp | | ■ | ← | prim_transcript |
| /note = primary transcript ENST00000520221 Protein coding | | | | | |
| ENO3 | 5454 .. 4,295,963,433 bp | | ■ | ← | gene |
| /note = gene ENSG00000108515 Protein coding | | | | | |

| Primer | Length | Binding Sites | Tm | Date Added |
|---|---------|---------------|------|--------------|
| ✓ PCR Forward /sequence = CACATGAATCAACAGTCTATGAGCC 44% GC / 7619.0 Da | 25-mer | 84 .. 108 | 57°C | Feb 22, 2024 |
| ✓ Sanger Sequencing Primer /sequence = GTTGGGAGAGATGAGGTTGG 55% GC / 6333.2 Da | 20-mer | 227 .. 246 | 56°C | Feb 22, 2024 |
| ✓ Donor Template SNV -> REV /sequence = CTAGCCTCCTTTCTCTTTCCTCCTCCAGCGCTAGTCCTGCTGATGGGCAAAGAAGGTGCCACGGTGGTTTGATCAACAAGAAATGTTATGAAATGG 49% GC / 30,741.0 Da | 100-mer | 314 .. 413 | 76°C | Feb 22, 2024 |
| ✓ gRNA Protospacer /sequence = GGCAAAGAAGTTGTCCACGG 55% GC / 6191.1 Da | 20-mer | 362 .. 381 | 52°C | Feb 22, 2024 |
| ✓ PCR Reverse /sequence = CACACAGCACCTTGTTAGTAGAATC 44% GC / 7610.0 Da | 25-mer | 677 .. 701 | 58°C | Feb 22, 2024 |