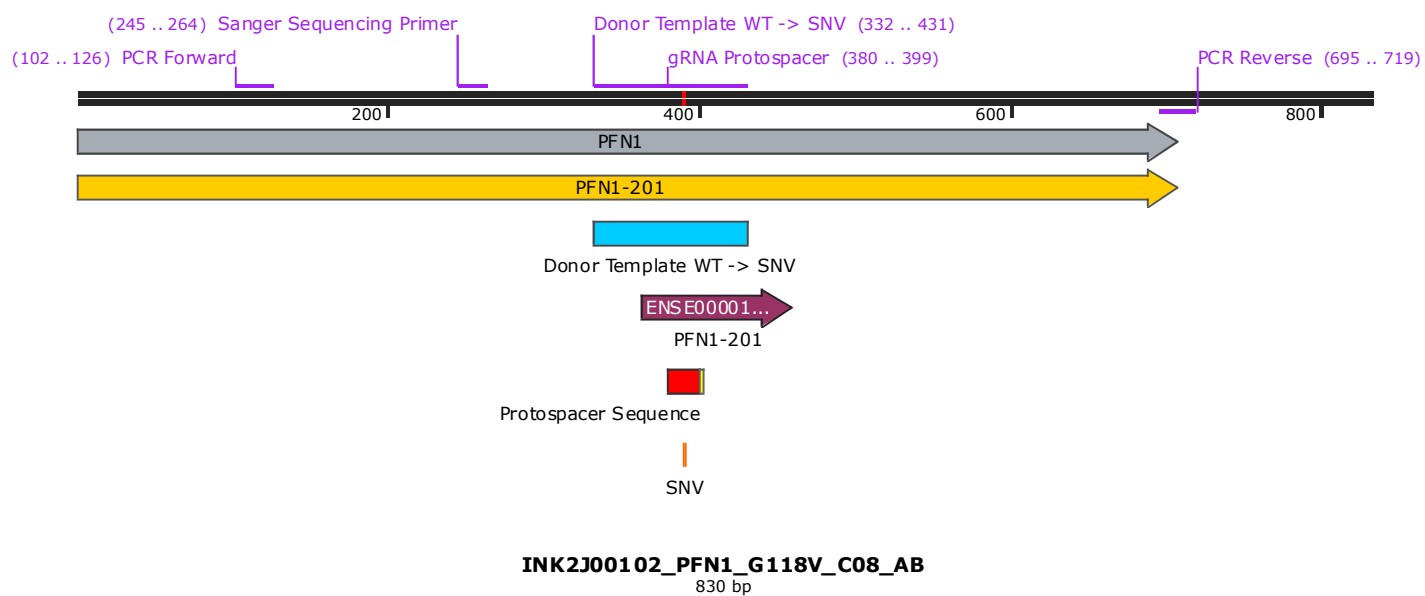
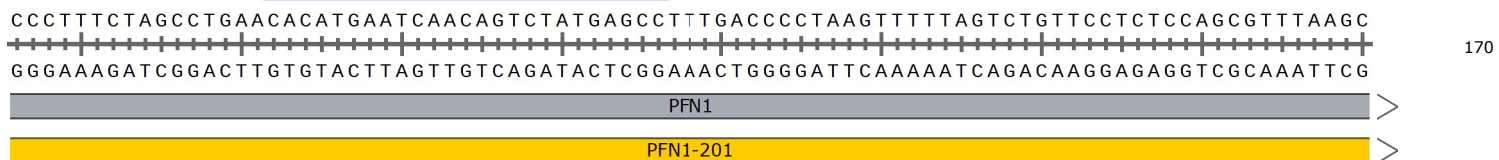
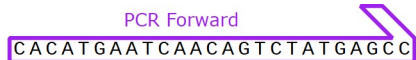
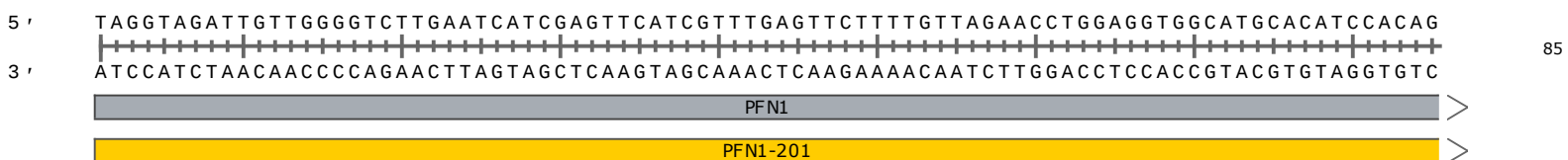


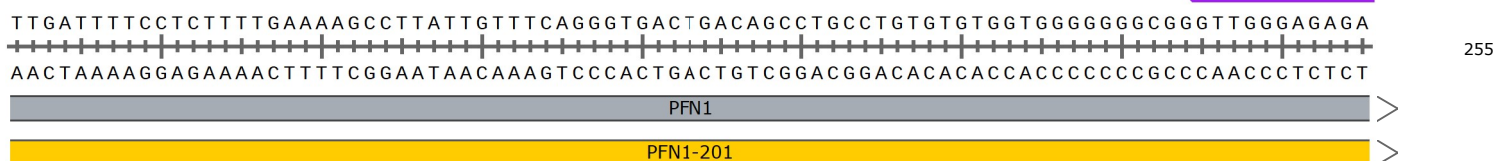
profilin 1 [Source:HGNC Symbol;Acc:HGNC:8881]





Sanger Sequencing Primer

GTTGGGAGAGA

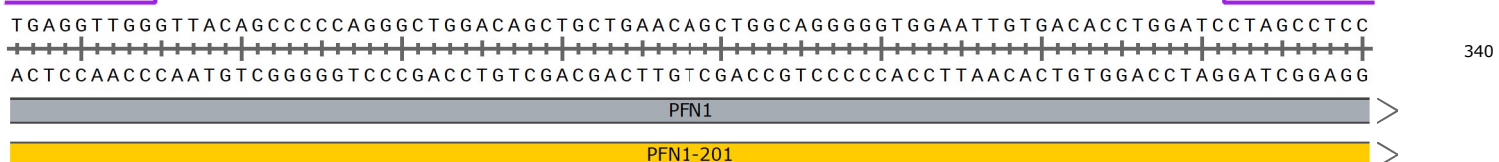


Sanger Sequencing Primer

TGAGGTTGG

Donor Template WT -> SNV

CTAGCCTCC

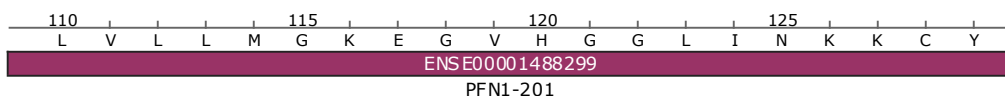
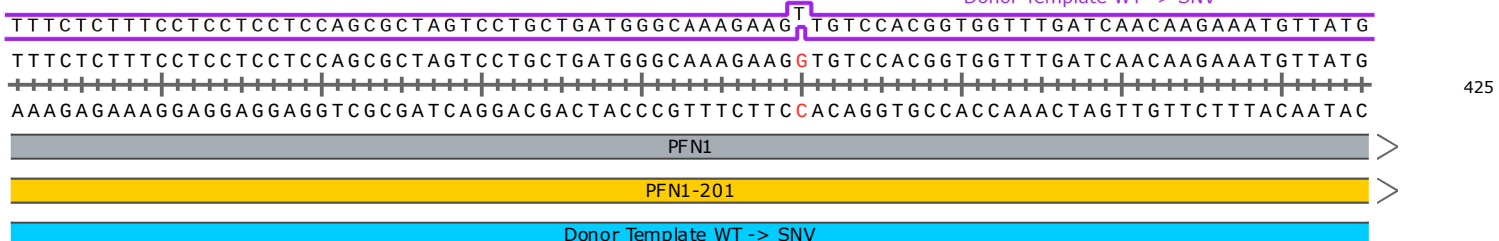


Donor Template WT -> SNV

gRNA Protospacer

GGCAAAGAAGGTGTCCACGG

Donor Template WT -> SNV



Donor Template WT -> SNV

AAATGG

AAATGGCCTCCCACCTTCGGCGTTCACAGTACTGACCTCGTCTGTCCCTTCCCCTTCCACCGCTCCCCACAGCTTTGCACCCCTTT
 TTTACCGGAGGGGTGGAAGCCGCAAGGGTTCATGACTGGAGCAGACAGGGAAGGGGAAGTGGCGAGGGGTGTCGAAACGTGGGGAAA

510

PFN1

PFN1-201

Donor Template WT -> SNV

130 135 140
 E M A S H L R R S Q Y *

ENSE00001488299

PFN1-201

CCTCCCCATACACACACAAACCATTTTTATTTTTTGGGCCATTACCCCATACCCCTTATTGCTGCCAAAACCACATGGGCTGGGGG
 GGAGGGGTATGTGTGTGTTTGGTAAAATAAAAAACCCGGTAATGGGGTATGGGGAATAACGACGGTTTTGGTGTACCCGACCCCC

595

PFN1

PFN1-201

CCAGGGCTGGATGGACAGACACCTCCCCCTACCCATATCCCTCCCGTGTGTGGTTGGAAAACCTTTGTTTTTTGGGGTTTTTTTT
 GGTCCCACCTACCTGTCTGTGGAGGGGGATGGGTATAGGGAGGGCACACACCAACCTTTGAAAACAAAAACCCCAAAAAAAA

680

PFN1

PFN1-201

TTCTGAATAAAAAAGATTCTACTAACAAGGTGCTGTGTGATTTGAGCTTGGGTGTCAGAATGGGGGATAGGCACTGTGACTTGCC
 AAGACTTATTTTTCTAAGATGATTGTTCCACGACACACTAAACTCGAACCCACAGTCTTACCCCTATCCGTGACACTGAACGG

765

PFN1

PFN1-201

CTAAGATGATTGTTCCACGACACAC

PCR Reverse

TCCTTTATCGTGGCTTGGGAGCAGGGAGGTTGAGGTAACAAGGTGCAGGAATTTGAGCTTCTG
 AGGAAATAGCACCGAACCCTCGTCCCTCCAACCTCCATGATGTTCCACGTCCTTAAACTCGAAGAC

3'

830

5'

Feature	Location	Size	Start	End	Type
✓ PFN1	1 .. 708	708 bp	■	→	gene
/note = gene ENSG00000108518 Protein coding					
✓ PFN1-201	1 .. 708	708 bp	■	→	prim_transcript
/note = primary transcript ENST00000225655					
PFN1-203	1 .. 693	693 bp	■	→	prim_transcript
/note = primary transcript ENST00000574872					
ENO3-204	150 .. 830	681 bp	■	←	prim_transcript
/note = primary transcript ENST00000519266 Protein coding					
✓ Donor Template WT -> SNV	332 .. 431	100 bp	■		misc_feature
✓ PFN1-201	363 .. 460	98 bp	■	→	CDS
/codon_start = 1					
/note = coding sequence ENSP00000225655					
/translation = LVLLMGKEGVHGGLINKKCYEMASHLRRSQY* 31 amino acids = 3.5 kDa					
PFN1-203	363 .. 460	98 bp	■	→	CDS
/codon_start = 1					
/note = coding sequence ENSP00000465019					
/translation = LVLLMGKEGVHGGLINKKCYEMASHLRRSQY* 31 amino acids = 3.5 kDa					
✓ Protospacer Sequence	380 .. 399	20 bp	■		misc_feature
✓ SNV	390 .. 390	1 bp	■		misc_feature
/note = WT = G SNV = T					
✓ PAM	400 .. 402	3 bp	■		misc_feature
ENO3-209	3578 .. 4,890,965,379 bp		■	←	prim_transcript
/note = primary transcript ENST00000520221 Protein coding					
ENO3	5489 .. 4,890,963,468 bp		■	←	gene
/note = gene ENSG00000108515 Protein coding					

Primer	Length	Binding Sites	Tm	Date Added
✓ PCR Forward /sequence = CACATGAATCAACAGTCTATGAGCC 44% GC / 7619.0 Da	25-mer	102 .. 126	57°C	Feb 22, 2024
✓ Sanger Sequencing Primer /sequence = GTTGGGAGAGATGAGGTTGG 55% GC / 6333.2 Da	20-mer	245 .. 264	56°C	Feb 22, 2024
✓ Donor Template WT -> SNV /sequence = CTAGCCTCCTTTCTCTTCTCCTCCTCCAGCGCTAGTCCTGCTGATGGGCAAAGAAGTTGCCACGGTGGTTTGATCAACAAGAAATGTTATGAAATGG 48% GC / 30,716.0 Da	100-mer	332 .. 431	75°C	Feb 22, 2024
✓ gRNA Protospacer /sequence = GGCAAAGAAGGTGTCCACGG 60% GC / 6216.1 Da	20-mer	380 .. 399	61°C	Feb 22, 2024
✓ PCR Reverse /sequence = CACACAGCACCTTGTTAGTAGAATC 44% GC / 7610.0 Da	25-mer	695 .. 719	58°C	Feb 22, 2024